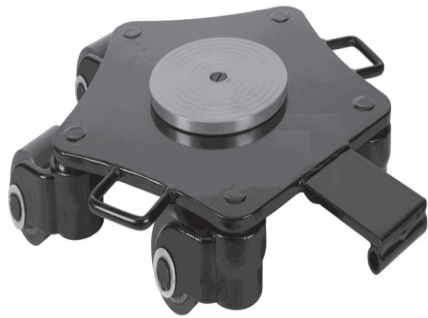


Machinery Mover

Manual



AQ-Y4



AQ-Y2

⚠ WARNING: Read carefully and understand all ASSEMBLY AND OPERATION INSTRUCTIONS before operating. Failure to follow the safety rules and other basic safety precautions may result in serious personal injury.

READ & SAVE THESE INSTRUCTIONS

Intended Use

Machinery Mover with 360° swivel is designed for maneuvering closely positioned heavy machinery, allowing loads to be moved in and out of confined spaces with ease. It features a rubber center pad for load gripping and stabilization.

Technical Specifications AQ-Y4

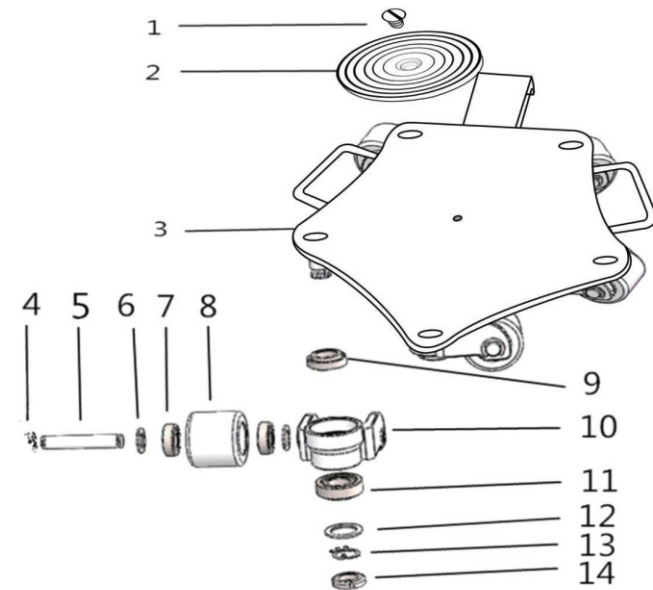
| Property | Specification |
|---------------------------|-------------------|
| Dimensions L x W x H (mm) | 588*550*112 |
| Material Type | Powder-coat Steel |
| Capacity (Kg.) | 4,000 |
| Product Weight (Kg.) | 36 |

Technical Specifications AQ-Y2

| Property | Specification |
|---------------------------|-------------------|
| Dimensions L x W x H (mm) | 420*505*112 |
| Material Type | Powder-coat Steel |
| Capacity (Kg.) | 2,000 |
| Product Weight (Kg.) | 22 |

AQ-Y4

Parts Diagram



Important Safety Information

⚠WARNING

- Read and understand all instructions. Failure to follow all instructions may result in serious injury or property damage.
- The warnings, cautions, and instructions in this manual cannot cover all possible conditions or situations that could occur. Exercise common sense and caution when using this tool. Always be aware of the environment and ensure that the tool is used in a safe and responsible manner.
- Do not allow persons to operate or assemble the product until they have read this manual and have developed a thorough understanding of how it works.
- Do not modify this product in any way. Unauthorized modification may impair the function and/or safety and could affect the life of the product. There are specific applications for which the product was designed.
- Use the right tool for the job. DO NOT attempt to force small equipment to do the work of larger industrial equipment. There are certain applications for which this equipment was designed. This product will be safer and do a better job at the capacity for which it was intended. DO NOT use this equipment for a purpose for which it was not intended.
- Industrial or commercial applications must follow OSHA requirements.

⚠WARNING

WORK AREA SAFETY

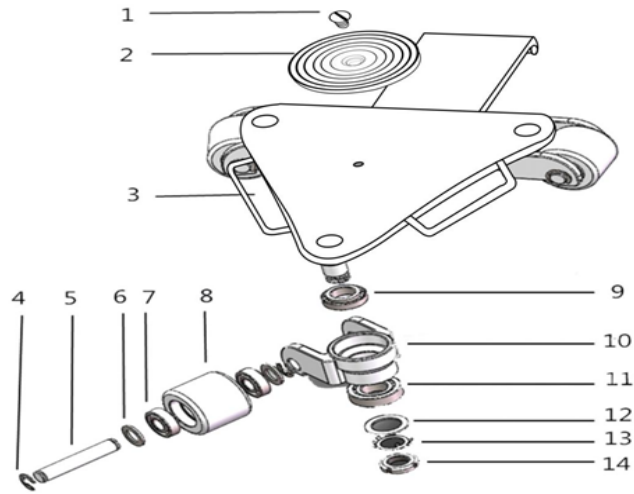
- Inspect the work area before each use. Keep work area clean, dry, free of clutter, and well-lit. Cluttered, wet, or dark work areas can result in injury. Using the product in confined work areas may put you dangerously close to cutting tools and rotating parts.
- Keep children and bystanders away from the work area while operating the tool. Do not allow children to handle the product.

Parts List

| Part Number | Part Description | Quantity |
|-------------|------------------|----------|
| 1 | Turntable screw | 1 |
| 2 | Turntable | 1 |
| 3 | Frame | 1 |
| 4 | Open ring | 10 |
| 5 | Roller shaft | 5 |
| 6 | Flat washer | 10 |
| 7 | Bearing 1 | 10 |
| 8 | Roller | 5 |
| 9 | Bearing 2 | 5 |
| 10 | Wheel frame | 5 |
| 11 | Bearing 3 | 5 |
| 12 | Washer | 5 |
| 13 | Locking washer | 5 |
| 14 | Locking nut | 5 |

AQ-Y2

Parts Diagram



Parts List

| No. | Description | Quantity |
|-----|------------------|----------|
| 1. | Turntable screw. | 1. |
| 2. | The turntable. | 1. |
| 3. | Frame. | 1. |
| 4. | Open ring. | 6. |
| 5. | Roller shaft. | 3. |
| 6. | Flat Washers. | 6. |
| 7. | Bearing 1. | 6. |
| 8. | Roller. | 3. |
| 9. | Bearing 2. | 3. |
| 10. | Wheel frame. | 3. |
| 11. | Bearing 3. | 3. |
| 12. | Washer. | 3. |
| 13. | Locking washers. | 3. |
| 14. | Locking nuts. | 3. |

⚠WARNING

PERSONAL SAFETY

- Stay alert, watch what you are doing, and use common sense when operating the tool. Do not use the tool while you are tired or under the influence of drugs, alcohol, or medication. A moment of inattention while operating the tool may result in serious personal injury.
- Dress properly. Do not wear loose clothing, dangling objects, or jewelry. Keep your hair, clothing and gloves away from moving parts. Loose clothes, jewelry, or long hair can be caught in moving parts. Air vents on the tool often cover moving parts and should be avoided.
- Wear the proper personal protective equipment when necessary. Use ANSI Z87.1 compliant safety goggles (not safety glasses) with side shields, or when needed, a face shield. Use a dust mask in dusty work conditions. Also use non-skid safety shoes, hardhat, gloves, dust collection systems, and hearing protection when appropriate. This applies to all persons in the work area.
- Do not overreach. Keep proper footing and balance at all times.

⚠CAUTION

MACHINERY MOVER USE AND CARE

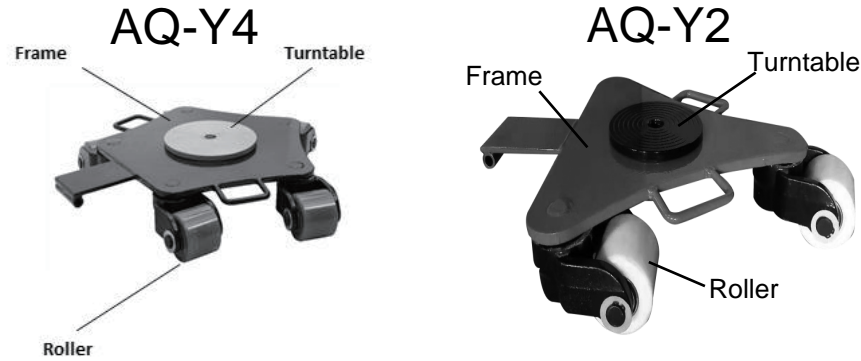
- Do not force the machinery mover. Products are safer and do a better job when used in the manner for which they are designed. Plan your work, and use the correct product for the job.
- Check for damaged parts before each use. Carefully check that the product will operate properly and perform its intended function. Replace damaged or worn parts immediately. Never operate the product with a damaged part.
- Store the product when it is not in use. Store it in a dry, secure place out of the reach of children. Inspect the tool for good working condition prior to storage and before re-use.
- Use only accessories that are recommended by the manufacturer for use with your product. Accessories that may be suitable for one product may create a risk of injury when used with another tool. Never use an accessory that has a lower operating speed or operating pressure than the tool itself.

Specific Operation Warnings

⚠WARNING

- Study, understand, and follow all instructions before operating this device.
- Do not exceed the rated capacity
- Use only on hard, level surfaces.
- When loading the cargo, load at a vertical angle to prevent a rollover.
- Before moving, lower the load to the lowest possible point.
- Before moving the load, be sure the load is centered and secured with a load restraining device.
- No alterations shall be made to this product.
- Failure to follow these warnings may result in personal injury and/or property damage.

Main Parts of Machinery Mover



| Subassembly |
|-------------|
| Frame |
| Turntable |
| Roller |

Before Each Use

⚠WARNING

- Keep the machine steady before operation.
- Before moving the load, be sure that the load is centered and secured with a load restraining device.
- Before moving, lower the load to the lowest possible point.

Operating Instructions

1. Choose the cargo in appropriate size and weight to load according to the machinery mover's capacity.
2. Place the machinery mover in an appropriate place where it's easy to move the cargo onto the unit.
3. Lift and lower the cargo slowly onto the machinery mover, making sure the cargo stays steadily on the unit. Then, push the cargo itself to move the machinery mover.

After Each Use

1. Keep the machinery mover clean after use.
2. Store the machinery mover when it is not in use. Store it in a dry, secure, and clean place for the next use.

3. Inspect the machinery mover for good working condition prior to storage and before re-use.
4. Keep children away. Not for use by or around them.
5. Keep all of the parts dry, clean, and free from oil and grease.
6. Use only soap and a damp cloth to clean your machinery mover.

Maintenance

Maintain the machinery mover by adopting a program of conscientious repair and maintenance in accordance with the following recommended procedures. It is recommended that the general condition of any tool be examined before it is used. Keep your tool in good repair. Keep all cutting tools sharp and clean. Properly maintained cutting tools with sharp cutting edges are less likely to bind and are easier to control. Keep handles dry, clean, and free from oil and grease. The following chart is based on a normal operation schedule.

| Maintenance Interval | Maintenance Point |
|----------------------|--|
| Before operating | The machinery mover should be kept steady before operation, avoid swinging. The machinery mover must only be used on firm and level surfaces. Not for use on soft or sloping surfaces. |
| After operation | Keep the machinery mover clean. |

Troubleshooting

Use the table below to troubleshoot problems before contacting service personnel or your local dealer. If the problem continues after troubleshooting, call your local dealer for assistance.

| Failure | Possible Cause | Corrective Action |
|-----------------------|---------------------------|-------------------|
| Wheels will not move. | Objects caught in wheels. | Clean wheels. |